

OXION[®]
simplify your world

5" Professional Coaxial Ceiling Speaker

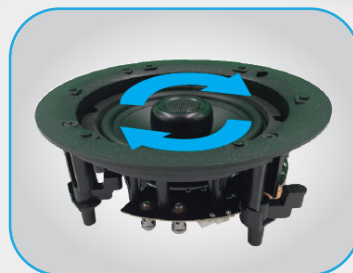
RMS Power : 20-40W

Impedance : 8Ω

Model: OX-PA2540W-SC



Magnetic Fit Steel Frame



Premiune Silk Tweeter



Premiune frequency filter



- 5" Coaxial Powered Professional Ceiling Speaker
- Fashion Frameless design, Magnet attaching grill
- Suitable for speech and music reproduction.
- Flush-mounting in ceiling cavity.
- Easy to install
- Unobtrusive in virtually all interiors.
- RMS Power: 30-40W
- Frequency Response: 100Hz-20,000Hz
- Woofer: 5"
- Tweeter: 1" Silk Dome
- Installation Cutting Diameter: 180mm



SPECIFICATIONS

| | |
|----------------------------|----------------|
| Model..... | OX-PA2540W-SC |
| Output Power Max: | 20W- 40W |
| Output Power RMS: | 40W |
| Diameter Tweeter:..... | 1" |
| Tweeter type : | Dome |
| Impedance : | 8Ohms |
| Frequency Response : | 100Hz-20,000Hz |
| Mounting Depth:..... | 90 mm |
| Cut-out Size..... | 180 mm |
| Dimension (L x W x H)..... | 207x207x90 |
| Weight : | 1.3 Kg |