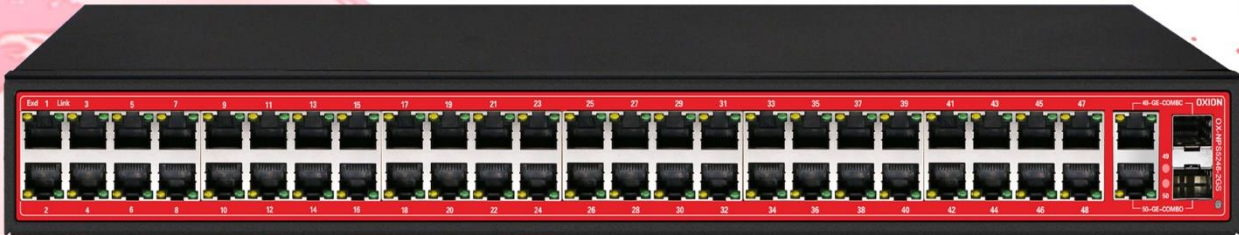


OXION

SIMPLIFY YOUR BUSINESS NETWORK

Data Sheet

Ai PoE Switch



Metal Case



Port Isolated



Compatible



Ai Watchdog



Lightning Protection

OX-NPS5248-2GS

48FE PoE + 2GE + 2SFP Compo Uplink
250M Long Range PoE Switch With 48Port PoE

sales@i-oxion.com - support@i-oxion.com

www.i-oxion.com

Ai-PoE Switch 48FE PoE+2GE SFP Compo Uplink



OX-NPS5248-2GS is 48*10/100+2GE+2SFP Compo uplink level high performance non network management PoE switch independently developed by Oxion . Ports 1-48 support PoE power supply of ieee802.3af/at standard. As PoE power supply equipment, it can automatically detect and identify the power receiving equipment that meets the standard and supply power to it through network cable. It is suitable for hotels, campuses, dormitories and enterprises to set up an economical and efficient PoE network.

Port Performance

- Provide 48*10 / 100 PoE RJ45 adaptive ports, all of which can realize line speed forwarding.
- Provide 2* 10/100/1000 SFP Compo uplink ports for high-speed uplink transmission.
- Each port supports MDI / mdix auto flip and duplex / rate self-negotiation.
- Support IEEE 802.3x full duplex flow control and backpressure half duplex flow control.

PoE Power Supply Function

- According to IEEE 802.3af/at PoE power supply standard, the maximum PoE output power of the whole machine is 700W, single port for the maximum PoE output power is 30W
- Automatic identification of PoE equipment for power supply without damaging non PoE equipment

Three working modes

- N -- standard switching mode: all ports communicate freely, suitable for common data transmission environment.
- V - port isolation mode: the downlink ports are isolated from each other, which is suitable for the use scenarios of connecting wireless AP, suppressing network storm and improving network performance.
- C -- flow control mode: port flow balance control, prevent big data flow packet loss, ensure the efficient and stable operation of user network.

The equipment is stable and reliable

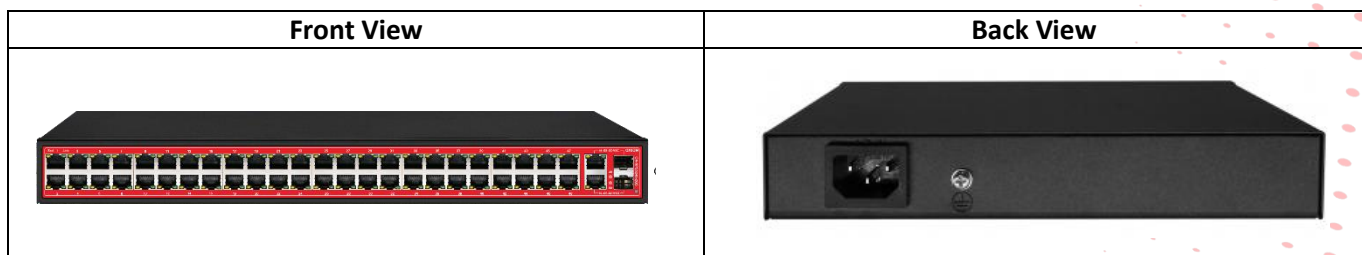
- OXION independent research and development of power supply, high redundancy design, to provide long-term stable PoE power output.
- The equipment meets the national CCC standard, fully meets the safety requirements, and is safe and reliable.

Easy to use

- Plug and play.
- Dynamic LED indicator provides simple working status prompt and troubleshooting.

Complete set of accessories

- By default, the switch is equipped with an AC power cord
- User Manual
- Optional rack lug



Ai-PoE Switch 48FE PoE+2GE SFP Compo Uplink



Model	OX-NPS5248-2GS
Product	48FE PoE+2GE SFP Compo Uplink PoE Switch
Fixed Port	48*10/100Base-TX PoE port (Data/Power) 2* COMBO
PoE Ports	1-48 port supports PoE
Network Protocol	IEEE 802.3 IEEE 802.3i 10BASE-T IEEE 802.3u100BASE-TX IEEE 802.3x IEEE 802.3z 1000BASE-X IEEE 802.3af/at
PoE Standard	IEEE802.3af/at
Port Specification	10/100/1000BaseT (X) Auto
Transmission Mode	Store and Forward(full wirespeed)
Bandwidth	17.6Gbps
Packet Forwarding	12.67Mpps
MAC Address	8K
Buffer	4.1M
Transmission Distance	10BASE-T : Cat3,4,5 UTP(≤250 meter) 100BASE-TX : Cat5 or later UTP(150 meter) 1000BASE-TX : Cat6 or later UTP(150 meter) 1000BASE-SX:62.5μm/50μm MMF(2m~550m) 1000BASE-LX:62.5μm/50μm MM(2m~550m) or 10μm SMF(2m~5000m)
Power Pin	Default1/2(+), 3/6(-); Optional order 4/5(+), 7/8(-)
Single port power	Average 15.4W ; MAX 30W
Total power/Input voltage	MAX 700W (AC100-240V 50/60HZ)
Watt	Standby Power Consumption : ≤30W ;
LED Indicator	Power LED 49 50:(SFP LED) Uplink:(Green=10/100MLED+Orange=1000M LED) Port:(Orange=PoE LED+Green=Link LED)
Power Input	Built-in power AC: 100~240V 50-60Hz 1A
Operating Temperature/Humidity	-10 ~ +55°C ; 5% ~ 90% RH Non coagulation

Storage Temperature/Humidity	-40 ~ +75°C ; 5% ~ 95% RH Non coagulation
Product size/Packing size (L*W*H)	445mm*295mm*45mm 515mm*375mm*95mm
N.W/G.W (kg)	5kg/5.8kg
Installation	Rack-mount(optional machine hanger spare parts)
Lightning protection level	3KV 8/20us ; IP30
Certificate	CE mark, commercial ; CE/LVD EN60950 ; FCC Part 15 Class B ; RoHS ;
Warranty	Whole device for 1 year(Accessories not included)

Application

